



# BLUE PRINT

COLUMBUS

Cleaner streams.  
Stronger neighborhoods.

## Clintonville 2

Mainline Sanitary & Sanitary Lateral Sewer Lining

April 23, 2026 | 6:00 – 8:00 p.m.



# BLUE PRINT COLUMBUS

Cleaner streams.  
Stronger neighborhoods.



## Welcome

### Moderator

LESLIE WESTERFELT  
RAMA

### Presenters

CAMERON KEIR  
Blueprint Columbus

PEYMAN MAJIDI, P.E.  
Blueprint Columbus



# BLUE PRINT

COLUMBUS

Cleaner streams.  
Stronger neighborhoods.



COLUMBUS  
WATER & POWER

## Agenda

- Blueprint 101:  
*A Refresher*
- Mainline & Lateral Lining:  
*A Deeper Dive*
- The Mainline Process:  
*In Your Neighborhood*
- What's Next?  
*Outreach*
- Q&A
- Open House



# BLUE PRINT COLUMBUS

Cleaner streams.  
Stronger neighborhoods.



## Project Outline

- Limited scope project
- You are impacted if:
  - ✓ Received a designation order letter
  - ✓ Received an impact card
  - ✓ We're NOT talking about green infrastructure or other Clintonville projects in the presentation

# Blueprint 101

*A Refresher*

---

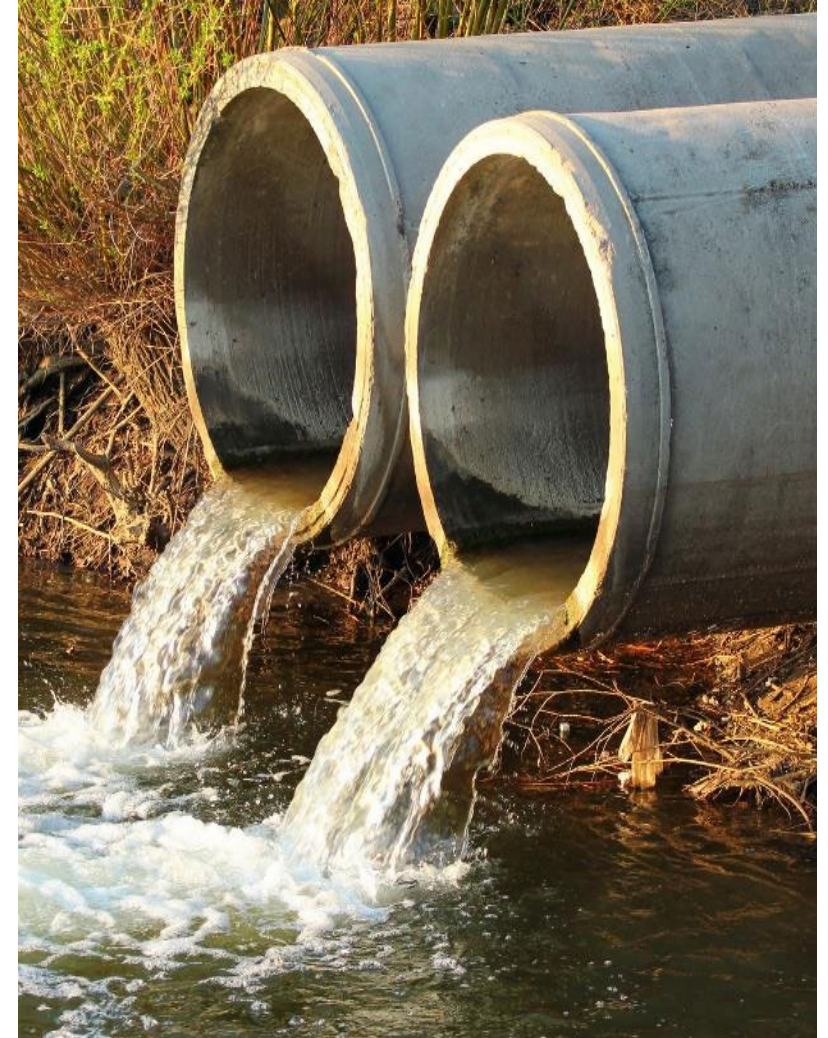
**CAMERON KEIR**

Columbus Water & Power

*City of Columbus*

# Rainwater in our Sanitary Sewer System Causes

- Sewer overflows into our rivers and streams
- Basement backups (sewage coming up from floor drain)
- Pollutants found on the street (dirt, oil, trash, etc.) get carried to our rivers and streams by storm sewers





# Consent Orders

## 2002 SSO (Sanitary Sewer Overflow) Order

Requires Columbus to address SSOs by providing adequate system capacity for base and peak flows

- Original plan submitted in 2005
- Original plan included two 14-mile deep sewer tunnels
- “Blueprint Alternative” submitted and approved by Ohio EPA in 2015

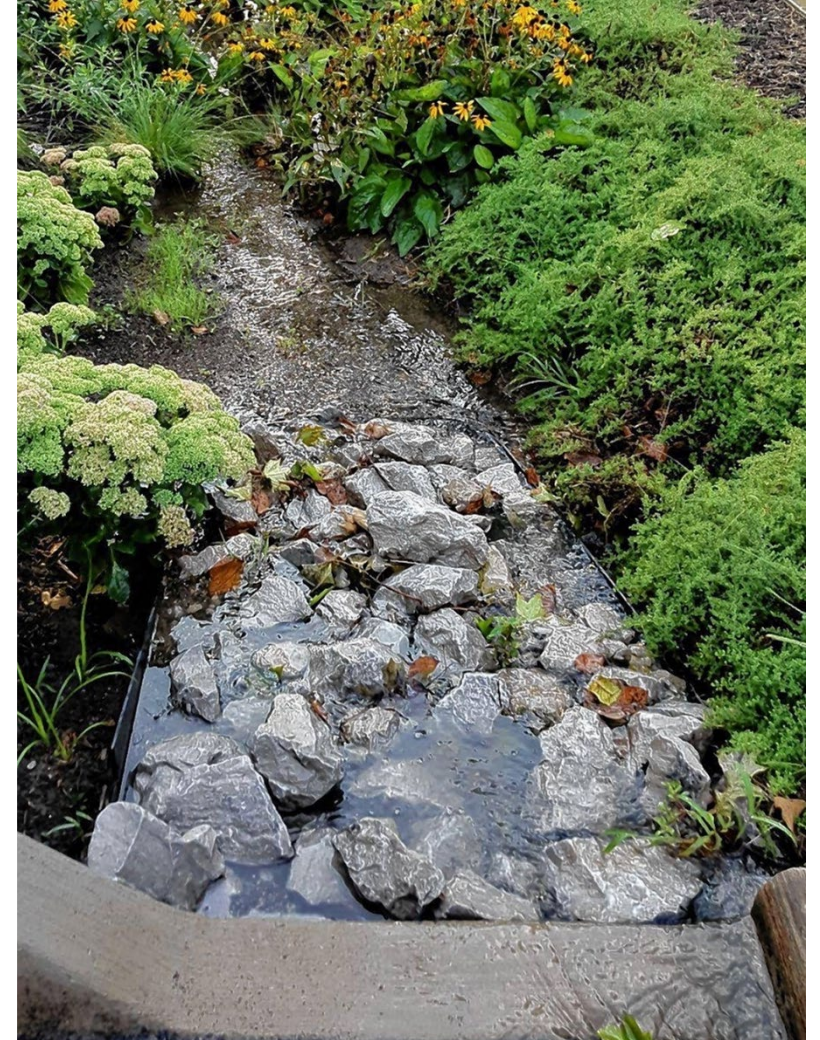
## 2004 CSO (Combined Sewer Overflow) Order

- Plan submitted in 2005
- OARs tunnel completed July 2017
- CSO volumes have reduced dramatically

**NOTE: Blueprint is NOT a flooding mitigation program by design alone**

# Blueprint: An Innovative, Green Solution

- Invests in fixing our existing infrastructure
- Uses local materials, native plants
- Creates opportunities to improve stormwater discharges
- Adds permanent local jobs
- Engages neighborhoods, residents
- Addresses consent order requirements



# The Four Pillars: How We Accomplish Our Goals

## GOAL 1: Treat stormwater before it enters our rivers and streams



### Lateral Lining

Seals aging sewer pipes from the inside. This minimally invasive process prevents rainwater from entering the sanitary sewer system, reduces overflows and extends the life of existing infrastructure.



### Sump Pumps

Manage groundwater at the foundation. An automated pit and float system pumps excess water away from the building—reducing pressure on the sanitary sewer system.



### Roof Water Redirection

Manages stormwater above ground. In limited circumstances, eligible homes may connect downspouts to the street—directing rainwater to the storm sewer where it belongs.

## GOAL 2: Reduce sanitary sewer overflows



### Green Infrastructure

Captures, slows and treats stormwater at the surface. Rain gardens, permeable pavement and silva cells naturally filter runoff before it reaches the storm sewer – improving the health of our watershed.

# Clintonville 2 Four Pillars Timeline

**\*Mainline - 2026\***  
**Remainder - 2029**

**2033 - 2035**

**2026 - 2035**

**2029 - 2035**



### Lateral Lining

- Keeps rainwater out of sanitary sewer
- Seals cracks and small breaks in pipes that carry rain away from your home to sewers



### Roof Water Redirection

- Limited Scope Project
- Redirects rainwater away from your home and to the street, so that it can't enter the sewer through connection joints around your home



### Sump Pumps

- Collects rainwater around your home's foundation
- Discharges rainwater into a pipe that discharges to the street

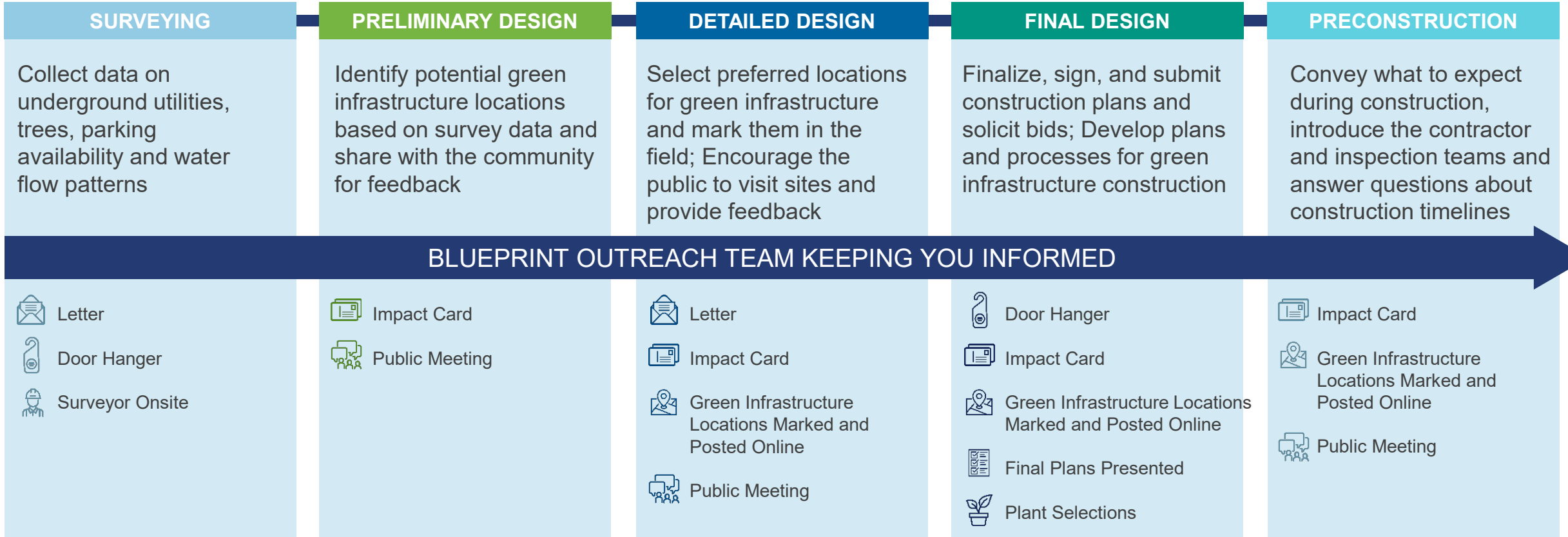


### Green Infrastructure

- Filters rainwater from the street
- Removes pollutants and trash
- Makes rainwater cleaner when it reaches rivers and streams

# Overall Schedule & Outreach-Design Phases

 Current Phase

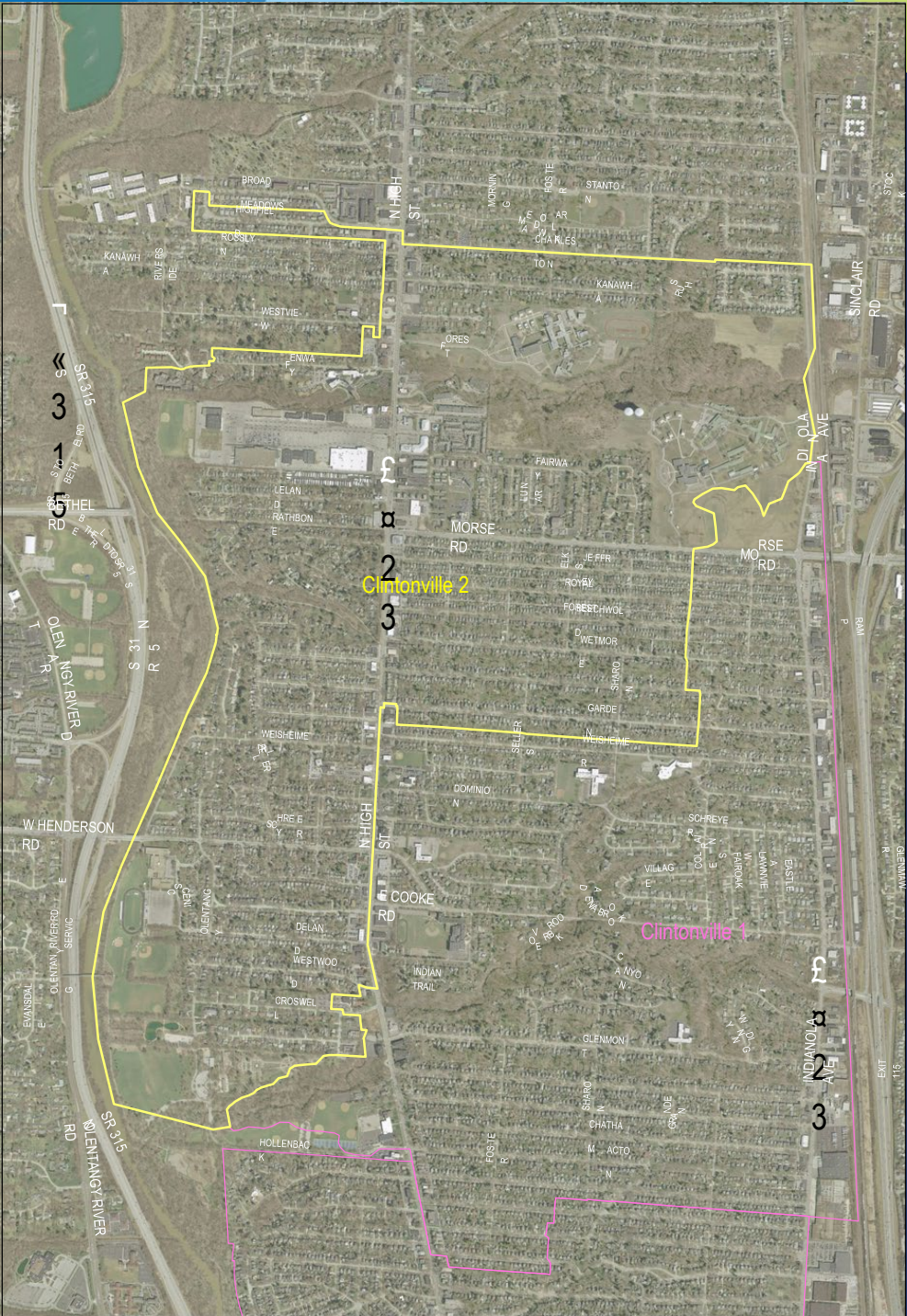


*How can residents participate?*

# Mainline & Lateral Lining

*A Deeper Dive*

# Clintonville 2 Project Area



# Clintonville 2 Mainline Lining Segments



# Lateral Lining and Sump Pumps



## Lateral Lining

- Seals cracked and loose laterals
- Prevents root intrusion/new blockage
- Seals lateral from water intrusion
- Improves property value



## Sump Pumps

- Prevent groundwater from entering sanitary sewers
- Move stormwater runoff away from homes' foundations
- Keep runoff from entering basements

# What is a Mainline Sewer?

- The mainline sanitary sewer is the large pipe that carries the wastewater from the homes on your street to the treatment plant
- Normally, this pipe is in the street
- In this area, the pipe runs through some utility easement behind your homes in yards and alleys



# What is a Utility Easement?

- A legally-defined portion of a property where a utility company has the right to access for installation, maintenance and repair of public utilities
- These easements have been in place since the early 1900s



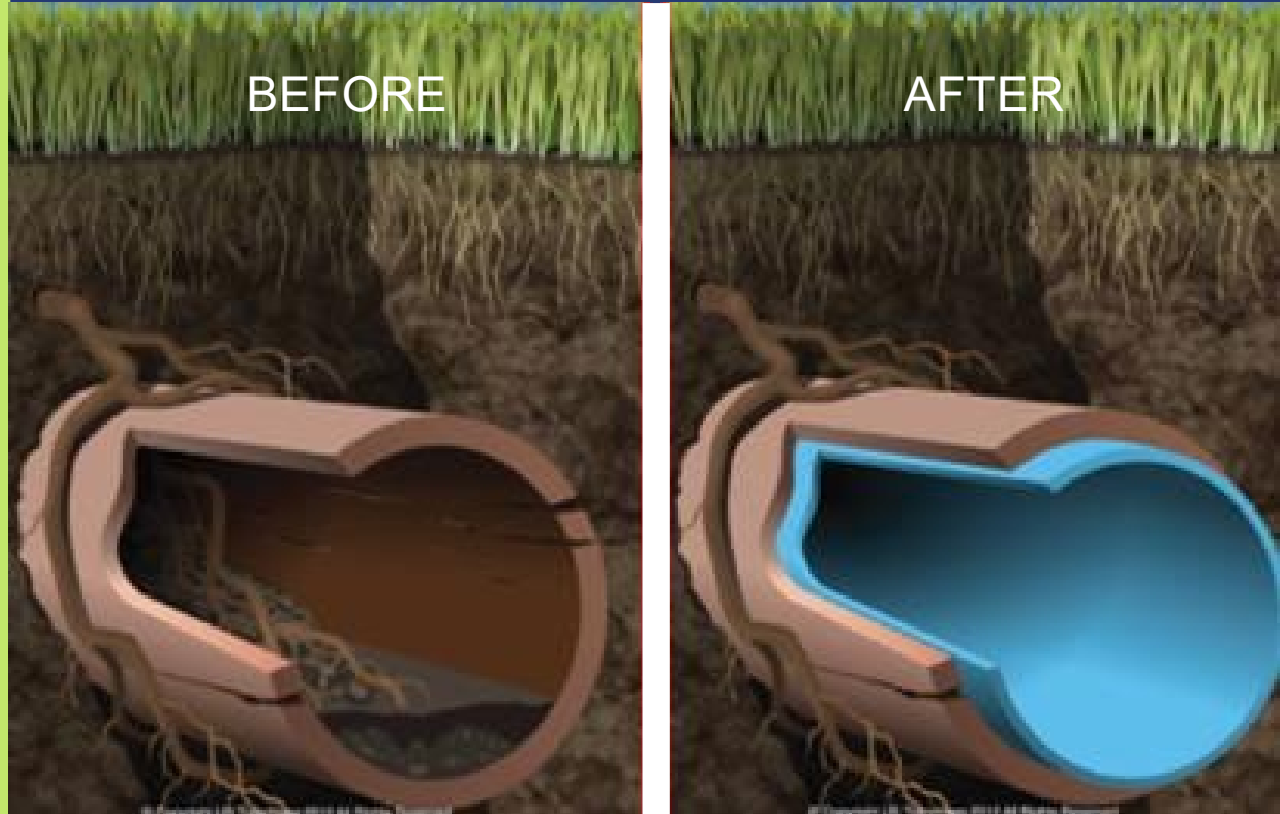
# Possibility Within Easement

- Fences
- Trees
- Sheds
- Swing sets
- Playgrounds
- Sandboxes



# What is the CIPP Lining Process?

- A process to maintain the sewer system
- Similar process for mainline sewers and individual sanitary laterals
- Crews clean and line the pipes, seal cracks and defects, and remove grease, roots and other deposits



# What are the Benefits?

- This prevents rainwater from entering the system
- Reduces sanitary sewer overflows
- Helps to eliminate basement backups



# The Mainline Process

*In Your Neighborhood*

---

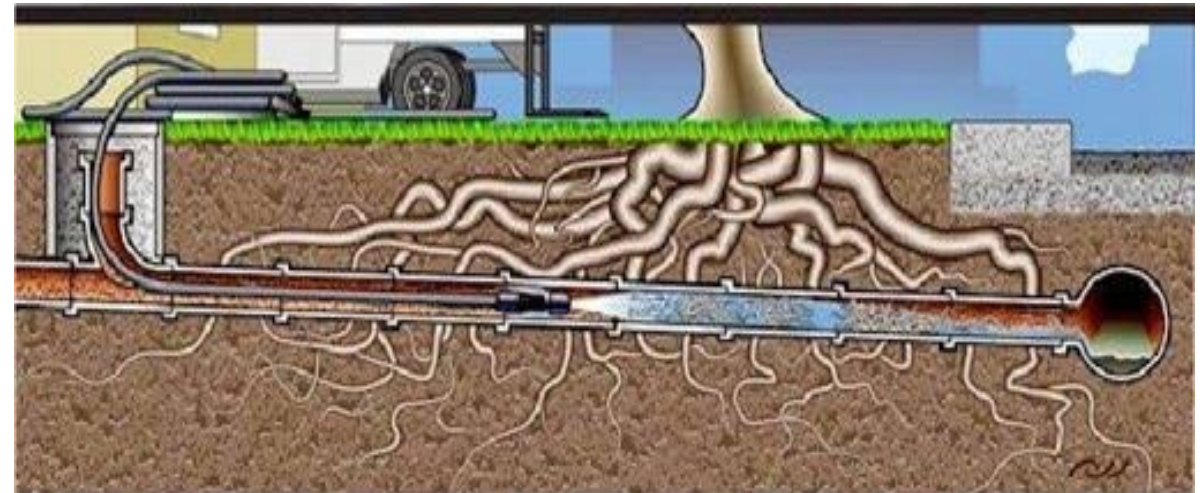
**PEYMAN MAJIDI**

Columbus Water & Power

*City of Columbus*

# Phase 1 – Cleaning & Televising

- Area survey to locate all manholes & identify manholes to be raised
- Starting from a manhole, a jetter is inserted to clean out the pipe
- Camera to record the condition of the pipe, noting defects or cracks
- Residents informed of any required point repairs on city easement abutting property



# Phase 1 – Point Repairs

- Crews will excavate the area to expose the pipe to repair it
- They may need to remove trees, fences, sheds, playground equipment, etc., for this work
- Residents will be notified, a meeting will be scheduled to discuss these details
- If items are removed, fences will be placed back on the right-of-way line if they extend into ROW/easement

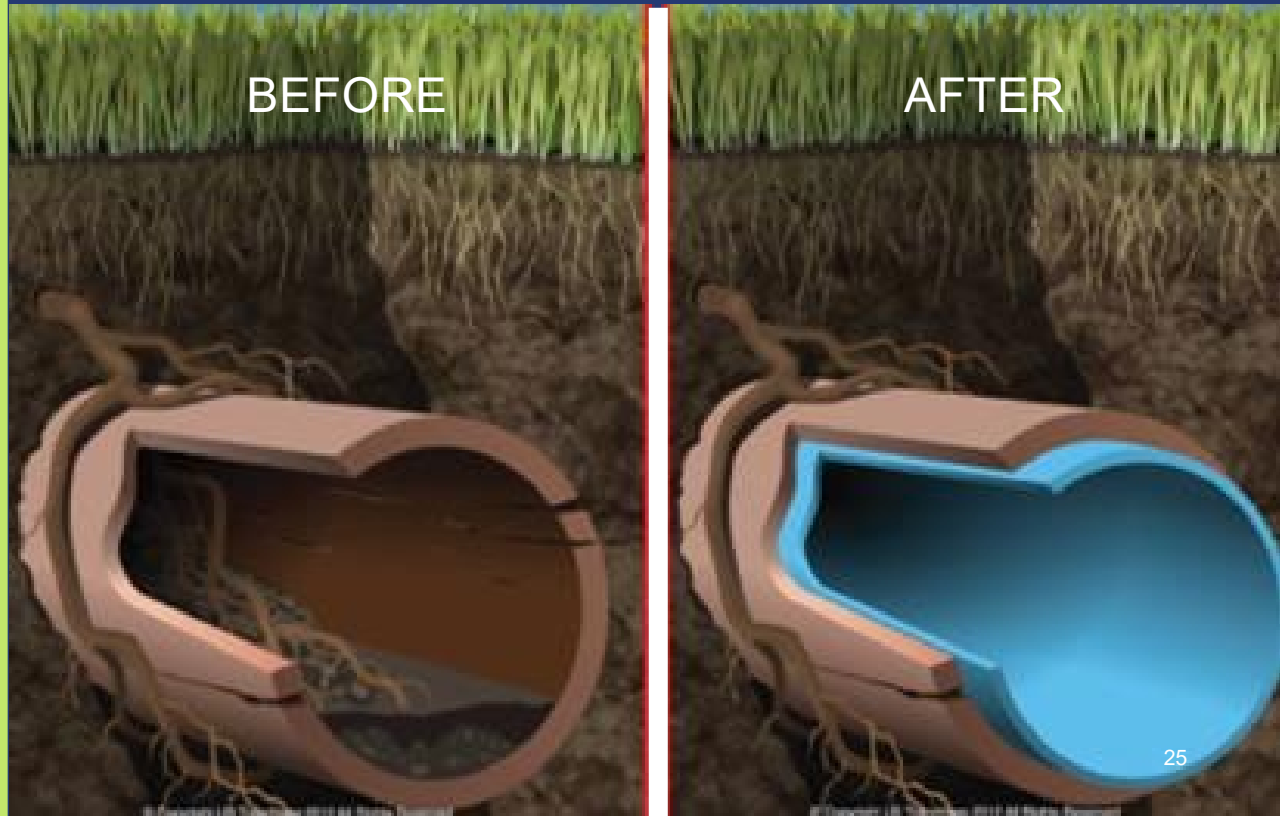


## Phase 2 – CIPP Pipe Lining

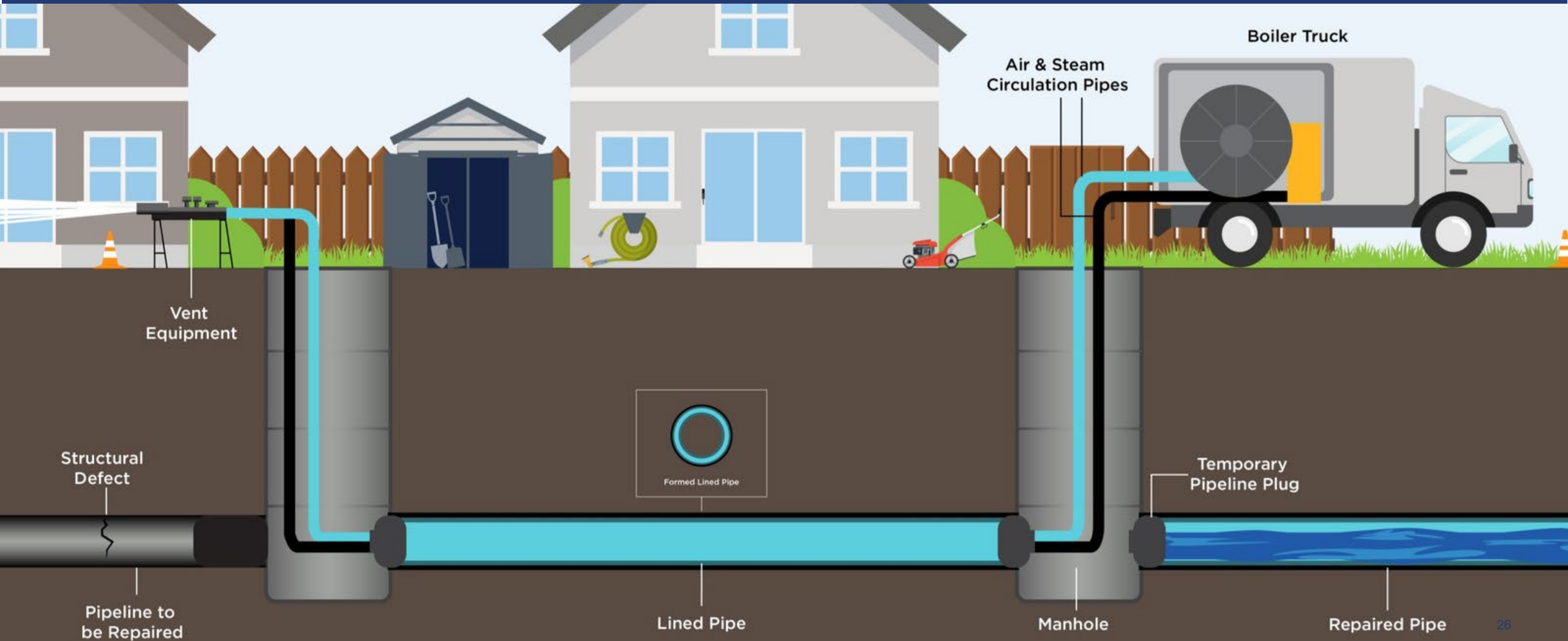
- Cured-in-place pipe lining is a trenchless technology
- It occurs from manhole to manhole, in segments of up to 600 ft.
- Equipment will be in backyards/alley
- This process takes between 8 and 24 hours to complete.
- Residents will be notified before lining starts

## How Residents Can Prepare

- ❑ Pour water in drains and traps to help prevent odors from entering your house
- ❑ Don't flush, shower or wash clothes during the lining process
- ❑ It's ok to use your sink for cooking

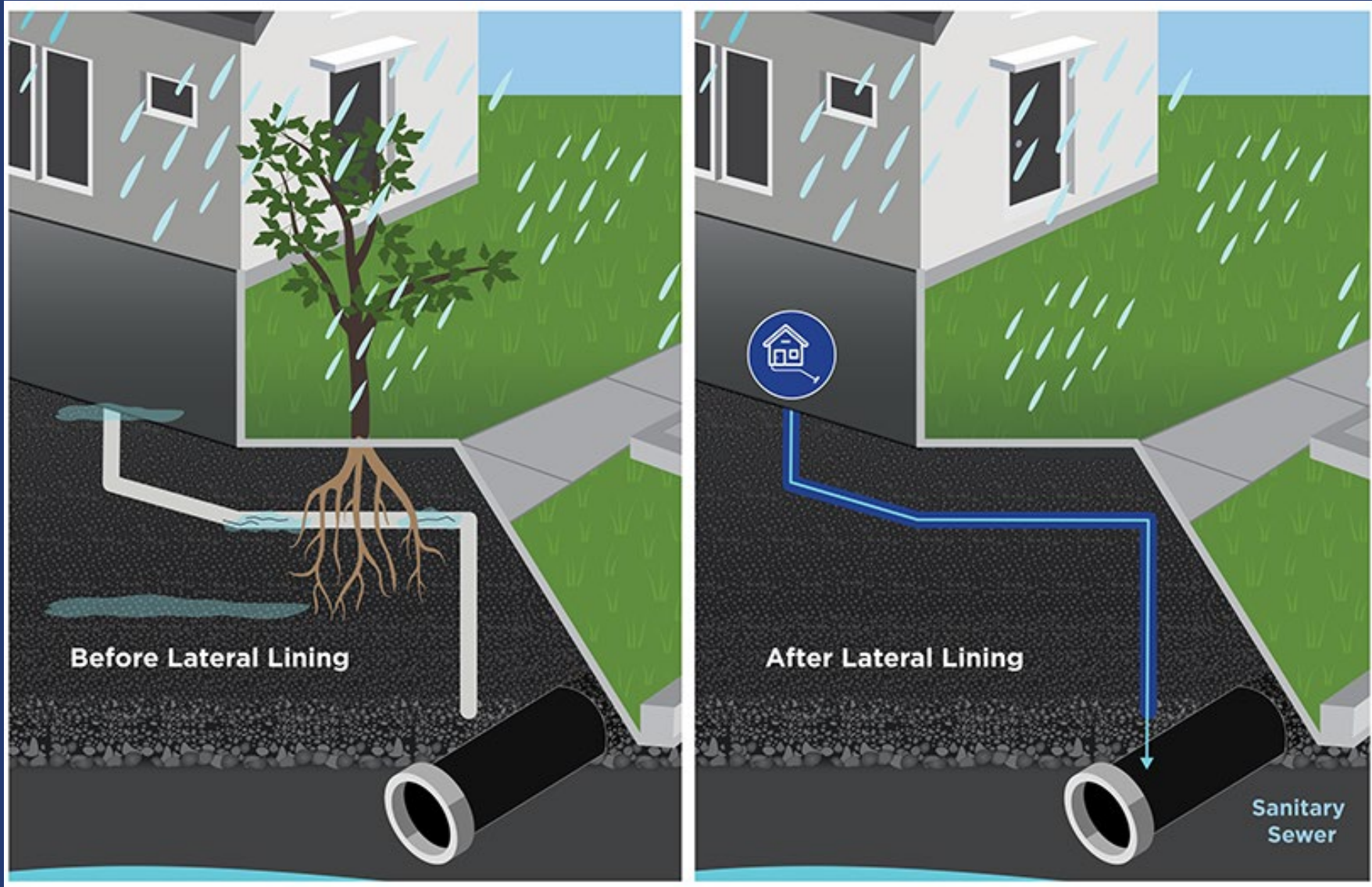


# CIPP Pipe Lining: What to Expect



# Phase 3 – Lateral Cleaning & Televising

- Starting from a manhole, a jetter is inserted to clean out the pipe
- Camera to record the condition of the pipe, noting defects or cracks
- Residents informed of any required point repairs on sanitary lateral



# Phase 4 - Manhole Rehabilitation

- Some manholes will need to be restored and raised to the proper height
- These adjustments will require excavation
- It may coincide with lining
- Disturbances or disruptions will be communicated and kept to a minimum
- Every manhole will need to be accessed



# Restoration Work

## Phase 1:

### Cleaning and televising

- Little to no restoration
- Care will be taken to preserve trees, grass and grade to the extent possible

### Point Repairs

- Mounds of dirt on top of filled excavation site will settle; there may be ponding around them at first
- Weather dependent seeding/mulching
- Multiple rounds of seeding may be necessary
- Affected fences and sheds will be put back
- Affected trees will be replanted

# Restoration Work

## Phase 2:

### CIPP Sewer Lining

- Will have various results
- Care will be taken to preserve trees, grass and grade to the extent possible

## Phase 3:

### Manhole Rehabilitation

- Minor grading
- Seed and straw



# Lead Service Line Replacement Update

---

**HANNAH MULLIN**  
Columbus Water & Power  
*City of Columbus*

# Water service line replacement

Is the water safe?

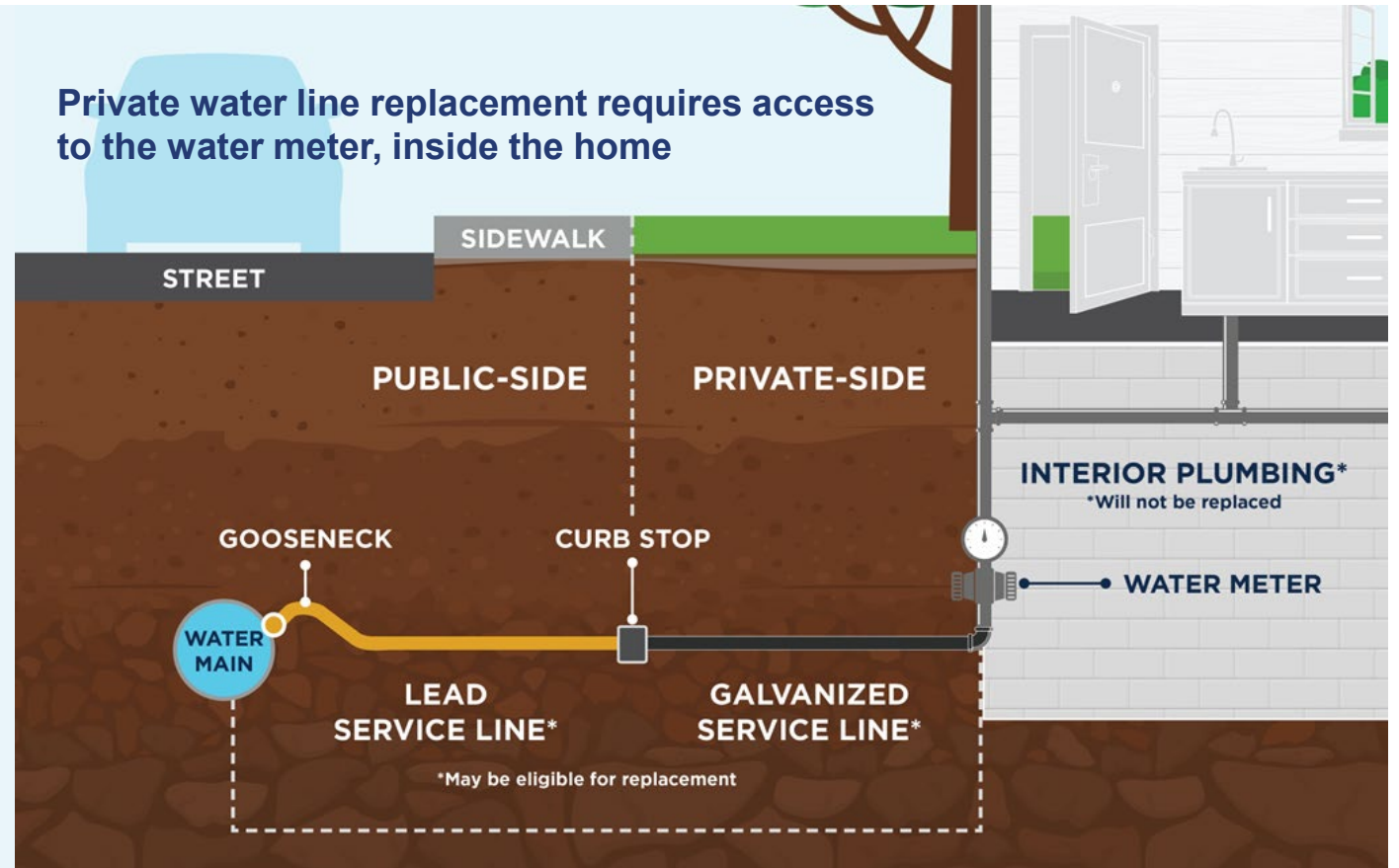
Yes!

What is being replaced?

Public and private water service lines made of lead and galvanized steel

Why are they being replaced?

To ensure we meet federal requirements and to remove old infrastructure



# How is Replacement Happening?

The city will replace lead/galvanized water lines during construction projects that are already planned

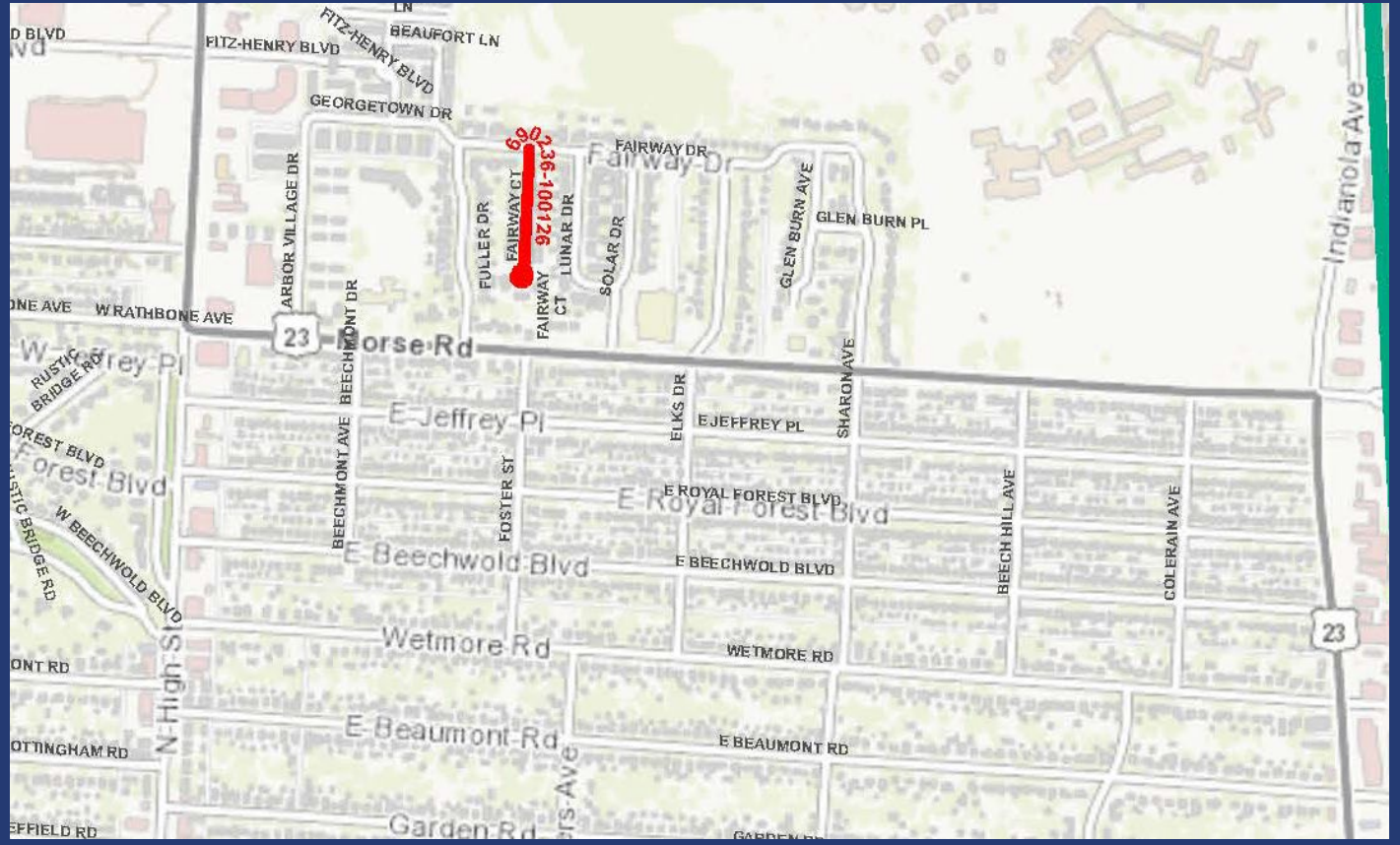
- Water main improvements
- Blueprint Columbus
- **2 construction projects planned**



# Fairway Court

- Water main improvement
- ***Tentative construction start date= May - June 2026***

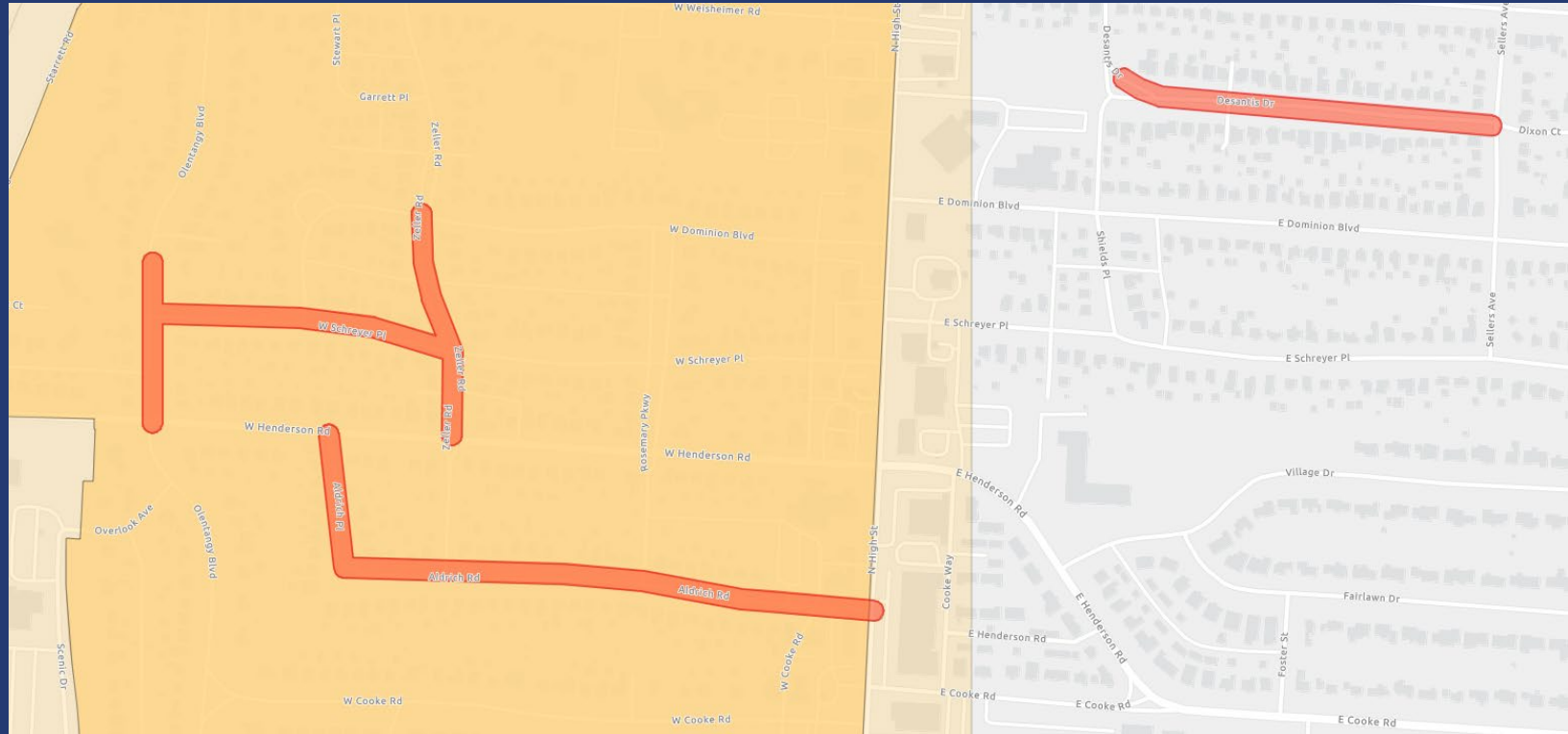
*Work agreement must be signed for water service line replacement.*



# Desantis Water Main

## Water main improvement

- 0% design
- Estimated construction is winter 2027
- Desantis Dr
- Zeller Dr
- W Schreyer Pl
- Aldrich Pl and Aldrich Rd



*Project is at 0% design. A property list is not yet available and is subject to change.*

# Replacement is required—action needed!

## Property owners must:

Identify Water Line Material  
[columbus.gov/leadsurvey](http://columbus.gov/leadsurvey)

Sign a Work Agreement  
[columbus.gov/newline](http://columbus.gov/newline)

Scan to sign work agreement



A work agreement is **required** to receive a free replacement during scheduled construction if the line is lead or galvanized.

# Outreach

*In Your Neighborhood*

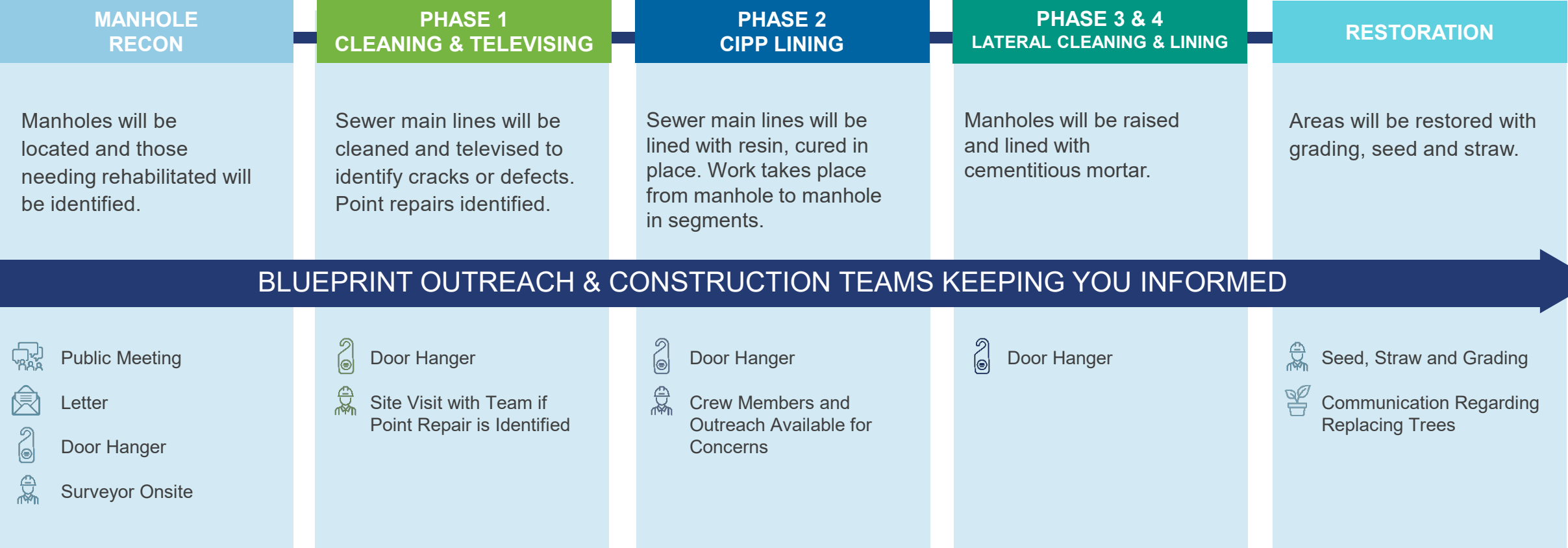
---

**Cameron Keir**

Columbus Water & Power

*City of Columbus*

# Outreach: What To Expect



# How Can You Help

- Engage with our outreach team in the neighborhood
- During work—allow easy yard access (secure pets, unlock gates, allow easement access)
- Respond to letters & door hangers

## Key Reminders

- Impacts in backyard & alley easements
- Have a manhole? 100% impact
- Easement must be accessible
- Minimally invasive, brief service disruptions

# Pause for Questions

---

Please keep to general Blueprint project questions

Feel free to utilize open house  
for property specific questions and Lead Service Line impact questions

# Open House

---

**For property-specific or other questions not addressed here, please email or call the**

Outreach Team

614-645-1253

[blueprint@columbus.gov](mailto:blueprint@columbus.gov)



# BLUE PRINT

COLUMBUS

Cleaner streams.  
Stronger neighborhoods.

## Thank you!

[blueprintneighborhoods.com](http://blueprintneighborhoods.com)

Follow us!   @blueprintcbus

