

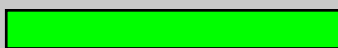
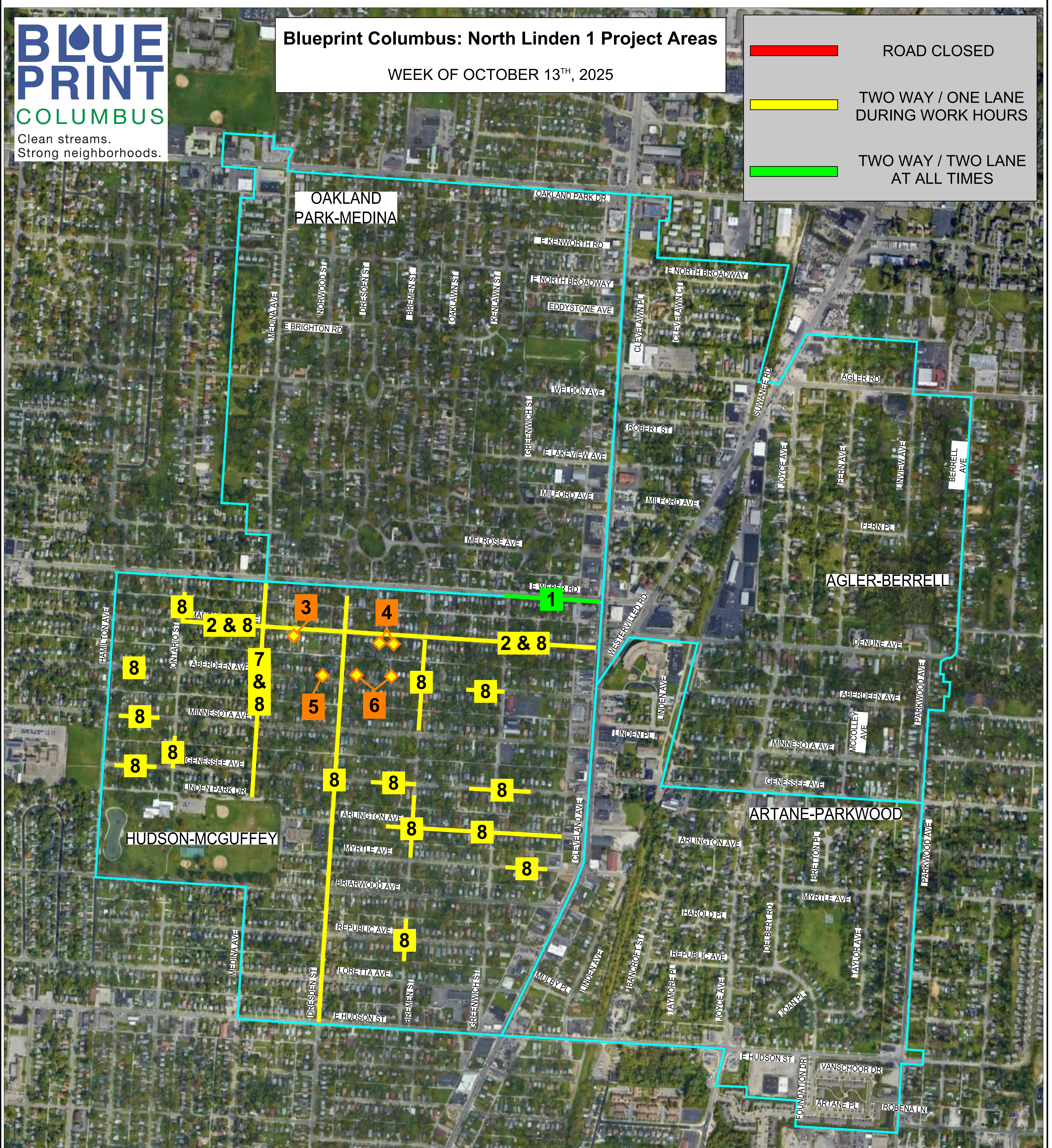


Blueprint Columbus: North Linden 1 Project Areas

WEEK OF OCTOBER 13TH, 2025

	ROAD CLOSED
	TWO WAY / ONE LANE DURING WORK HOURS
	TWO WAY / TWO LANE AT ALL TIMES



HUDSON-MCGUFFEY

- 1) E. WEBER RD. (GREENWICH ST. / CLEVELAND AVE.) -- GREEN INFRASTRUCTURE INSTALLATION BY TRUCCO CONSTRUCTION.
- 2) MANCHESTER AVE. (ONTARIO ST. / CLEVELAND AVE.) -- PLANING AND ASPHALT PAVING OVERLAY BY TRUCCO CONSTRUCTION.
- 3) 1431 MANCHESTER AVE. -- POINT REPAIRS BY BLD.
- 4) 1517 / 1525 MANCHESTER AVE. -- POINT REPAIRS BY BLD.
- 5) 1456 ABERDEEN AVE. -- POINT REPAIRS BY BLD.
- 6) 1488 / 1524 ABERDEEN AVE. -- POINT REPAIRS BY BLD.
- 7) MEDINA AVE. (LINDEN PARK DR. / E. WEBER RD.) -- GREEN INFRASTRUCTURE INSTALLATION BY TRUCCO CONSTRUCTION.
- 8) ALL RAIN GARDEN BASINS ON DRESDEN ST., BREMEN ST., ONTARIO ST., MEDINA AVE., ABERDEEN AVE., MINNESOTA AVE., GENESSEE AVE., ARLINGTON AVE., AND MYRTLE AVE.

Note 1 – Street resurfacing will start on Manchester Ave. the week of October 06, 2025. There will be **NO PARKING** on Manchester Ave. between Cleveland Ave. and Ontario St. between the hours of 7:00 a.m. and 7:00 p.m. Parking in this area will be permitted overnight. Signs will be posted throughout this area 72 hours in advance.

Note 2 – Miscellaneous street resurfacing will be performed the week of October 06, 2025, in the general vicinity of basins with limited areas of **NO PARKING** along Dresden St., Bremen St., Ontario St., Medina Ave., Aberdeen Ave., Minnesota Ave., Genessee Ave., Arlington Ave., and Myrtle Ave. The specific areas will be signed 72 hours in advance of the no parking restrictions.

