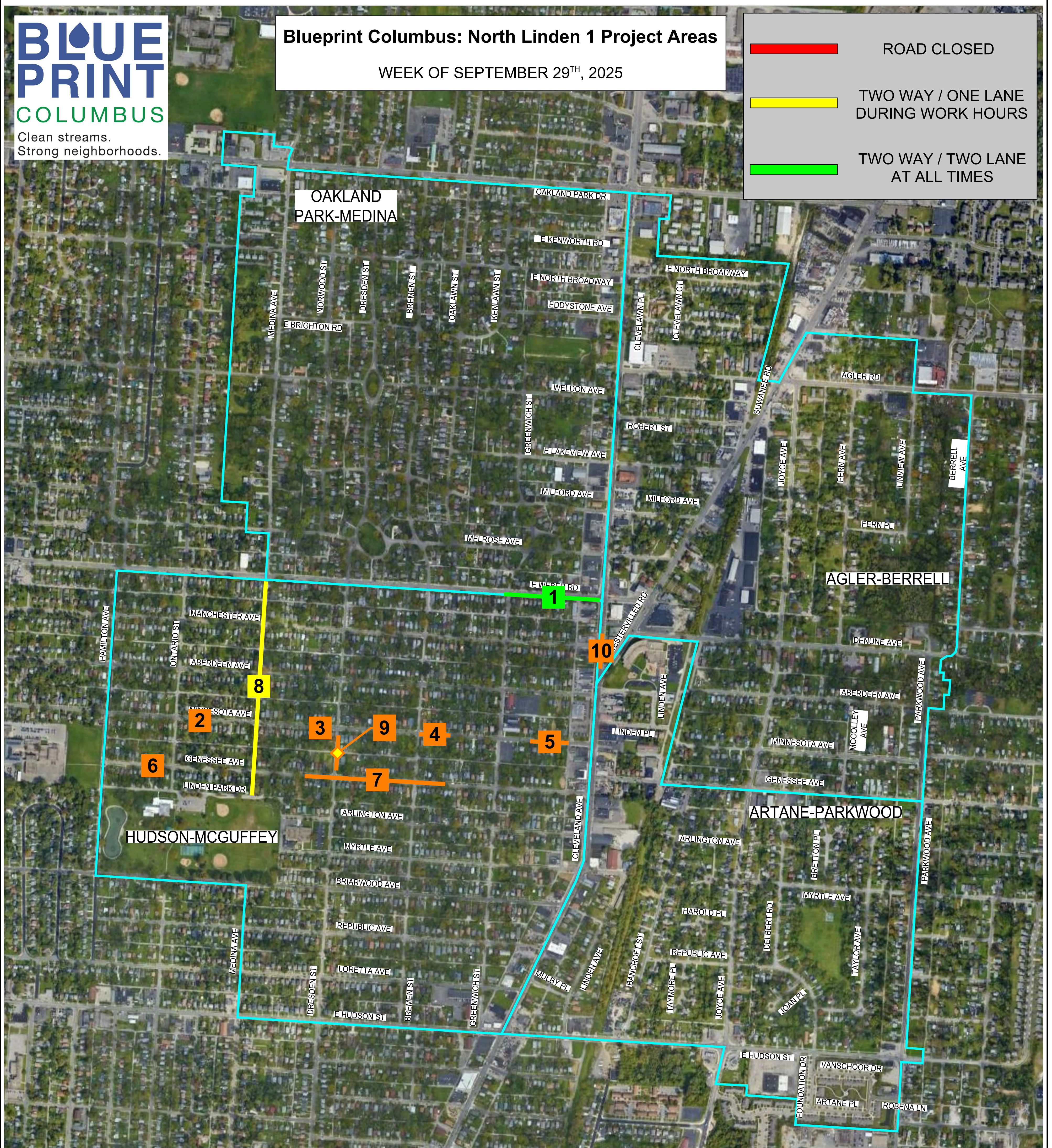


**Blueprint Columbus: North Linden 1 Project Areas**

WEEK OF SEPTEMBER 29<sup>TH</sup>, 2025

- ROAD CLOSED
- TWO WAY / ONE LANE DURING WORK HOURS
- TWO WAY / TWO LANE AT ALL TIMES



**HUDSON-MCGUFFEY**

- 1) E. WEBER RD. (GREENWICH ST. / CLEVELAND AVE.) -- GREEN INFRASTRUCTURE INSTALLATION BY TRUCCO CONSTRUCTION.
- 2) 1323 MINNESOTA AVE. -- SANITARY LATERAL LINING BY BLD.
- 3) 1451 MINNESOTA AVE. -- POINT REPAIRS BY BLD.
- 4) 1547-1563 MINNESOTA AVE.-- SANITARY LATERAL LINING BY BLD.
- 5) 1657-1683 MINNESOTA AVE. -- POINT REPAIRS BY BLD.
- 6) 1273 GENESSEE AVE. -- SANITARY LATERAL LINING BY BLD.
- 7) 1422-1558 GENESSEE AVE. -- SANITARY LATERAL LINING BY BLD.
- 8) MEDINA AVE. (LINDEN PARK DR. / E. WEBER RD.) -- GREEN INFRASTRUCTURE INSTALLATION BY TRUCCO CONSTRUCTION.
- 9) 2582-2602 DRESDEN ST. -- POINT REPAIRS / SANITARY LATERAL LINING BY BLD.
- 10) 2676 CLEVELAND AVE. -- DRIVE ENTRANCE REPLACEMENT AT GAS STATION BY TRUCCO CONSTRUCTION. \*\*\*NORTHBOUND RIGHT LANE CLOSED 9am-3pm ON 09/29-09/30.\*\*\*

**Note 1** – Street resurfacing will start on Manchester Ave. the week of October 06, 2025. There will be **NO PARKING** on Manchester Ave. between Cleveland Ave. and Ontario St. between the hours of 7:00 a.m. and 7:00 p.m. Parking in this area will be permitted overnight. Signs will be posted throughout this area 72 hours in advance.

**Note 2** – Miscellaneous street resurfacing will be performed the week of October 06, 2025, in the general vicinity of basins with limited areas of **NO PARKING** along Dresden St., Bremen St., Ontario St., Medina Ave., Aberdeen Ave., Minnesota Ave., Genessee Ave., Arlington Ave., and Myrtle Ave. The specific areas will be signed 72 hours in advance of the no parking restrictions.