
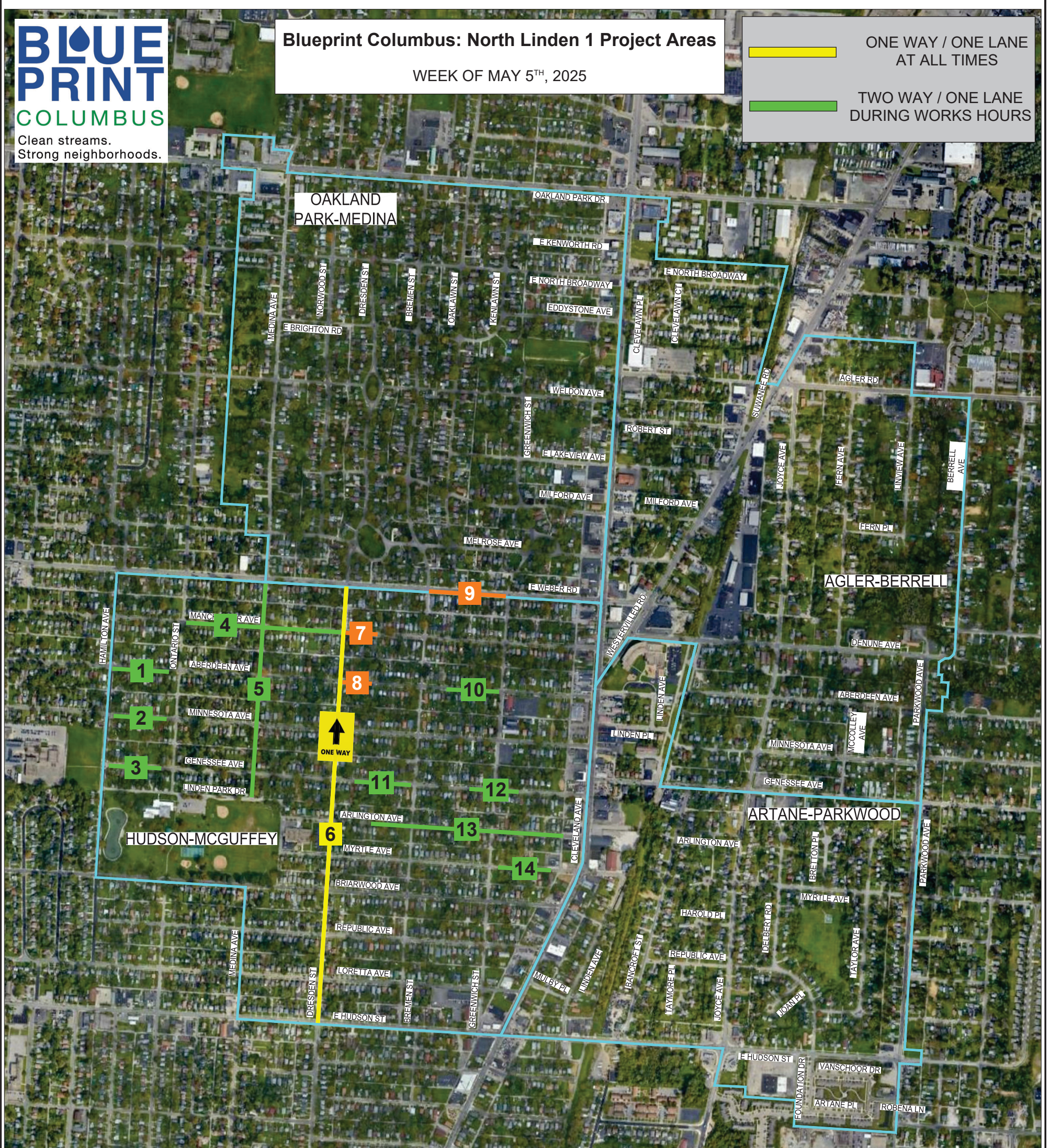
 ONE WAY / ONE LANE AT ALL TIMES
 TWO WAY / ONE LANE DURING WORKS HOURS



HUDSON-MCGUFFEY

- 1) ABERDEEN AVE. (HAMILTON AVE. / ONTARIO ST.) -- GREEN INFRASTRUCTURE INSTALLATION BY TRUCCO CONSTRUCTION.
- 2) MINNESOTA AVE. (HAMILTON AVE. / ONTARIO ST.) -- WATER LINE RELOCATION BY TRUCCO CONSTRUCTION.
- 3) GENESSEE AVE. (HAMILTON AVE. / ONTARIO ST.) -- GREEN INFRASTRUCTURE INSTALLATION BY TRUCCO CONSTRUCTION.
- 4) MANCHESTER AVE. (ONTARIO ST. / DRESDEN ST.) -- WATER SERVICE INSTALLATION BY TRUCCO CONSTRUCTION.
- 5) MEDINA AVE. (LINDEN PARK DR. / E. WEBER RD.) -- GREEN INFRASTRUCTURE INSTALLATION BY TRUCCO CONSTRUCTION.
- 6) DRESDEN ST. (E. HUDSON ST. / E. WEBER RD.) -- GREEN INFRASTRUCTURE INSTALLATION BY TRUCCO CONSTRUCTION.
- 7) 1487-1507 MANCHESTER AVE. -- SANITARY LATERAL LINING BY BLD.
- 8) 1480-1492 ABERDEEN AVE. -- SANITARY LATERAL LINING BY BLD.
- 9) E. WEBER RD. (BREMEN ST. / GREENWICH ST.) -- GREEN INFRASTRUCTURE INSTALLATION BY TRUCCO CONSTRUCTION.
- 10) ABERDEEN AVE. (BREMEN ST. / GREENWICH ST.) -- WATER LINE RELOCATION BY TRUCCO CONSTRUCTION.
- 11) GENESSEE AVE. (DRESDEN ST. / BREMEN ST.) -- GREEN INFRASTRUCTURE INSTALLATION BY TRUCCO CONSTRUCTION.
- 12) GENESSEE AVE. (GREENWICH ST. INTERSECTION) -- WATER LINE RELOCATION BY TRUCCO CONSTRUCTION.
- 13) ARLINGTON AVE. (DRESDEN ST. / CLEVELAND AVE.) -- WATER LINE RELOCATION BY TRUCCO CONSTRUCTION.
- 14) MYRTLE AVE. (GREENWICH ST. / CLEVELAND AVE.) -- GREEN INFRASTRUCTURE INSTALLATION BY TRUCCO CONSTRUCTION.

