

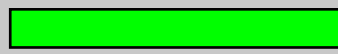
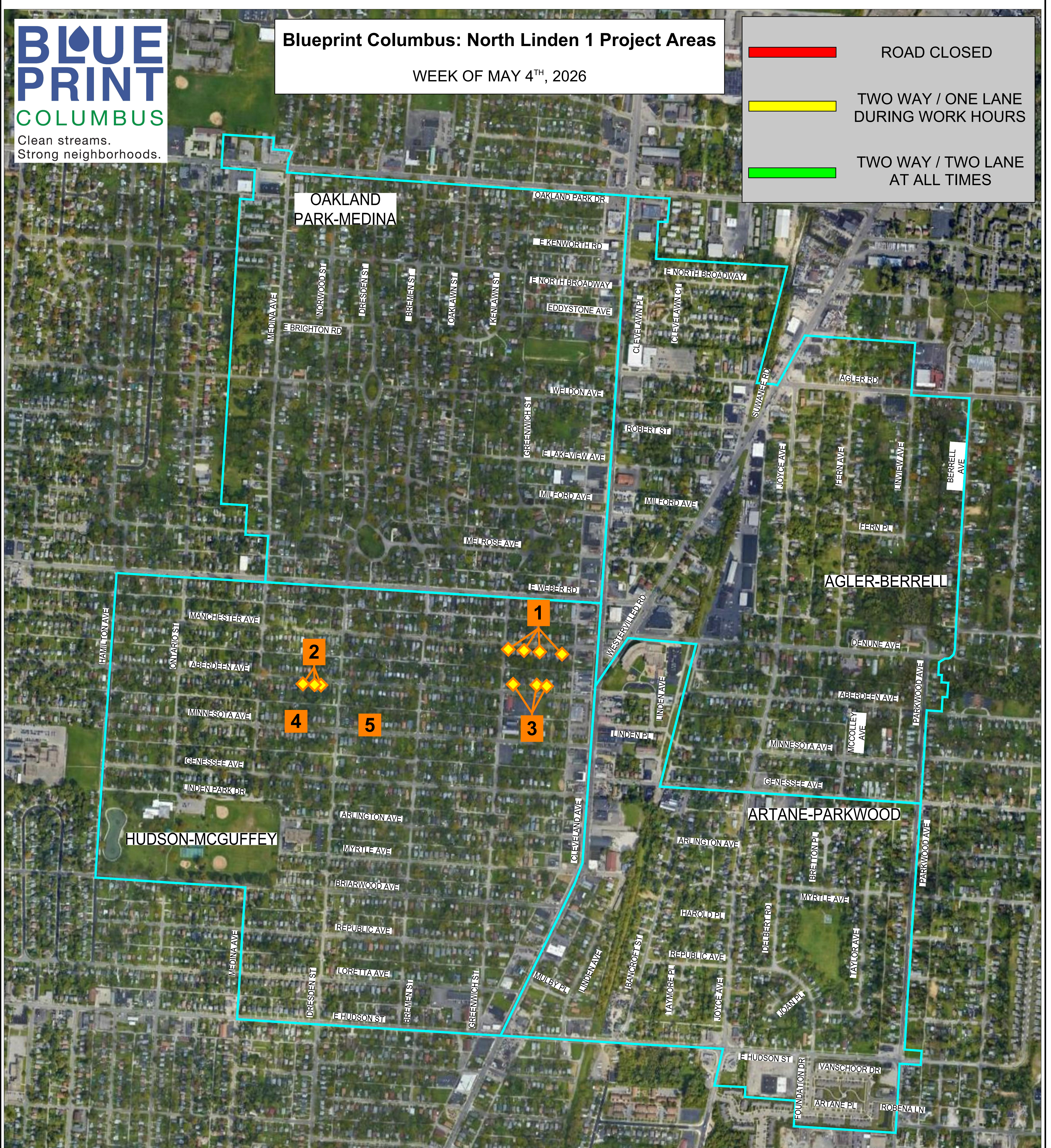


Blueprint Columbus: North Linden 1 Project Areas

WEEK OF MAY 4TH, 2026

	ROAD CLOSED
	TWO WAY / ONE LANE DURING WORK HOURS
	TWO WAY / TWO LANE AT ALL TIMES



HUDSON-MCGUFFEY

- 1) 1647 / 1661 / 1677 / 1699 MANCHESTER AVE. -- POINT REPAIRS BY BLD.
- 2) 1435 / 1443 / 1449 ABERDEEN AVE. -- POINT REPAIRS BY BLD.
- 3) 1646 / 1668-1670 / 1680 ABERDEEN AVE. -- POINT REPAIRS BY BLD.
- 4) 1424 MINNESOTA AVE. -- POINT REPAIRS BY BLD.
- 5) 1496 MINNESOTA AVE. -- POINT REPAIRS BY BLD.

