

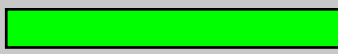
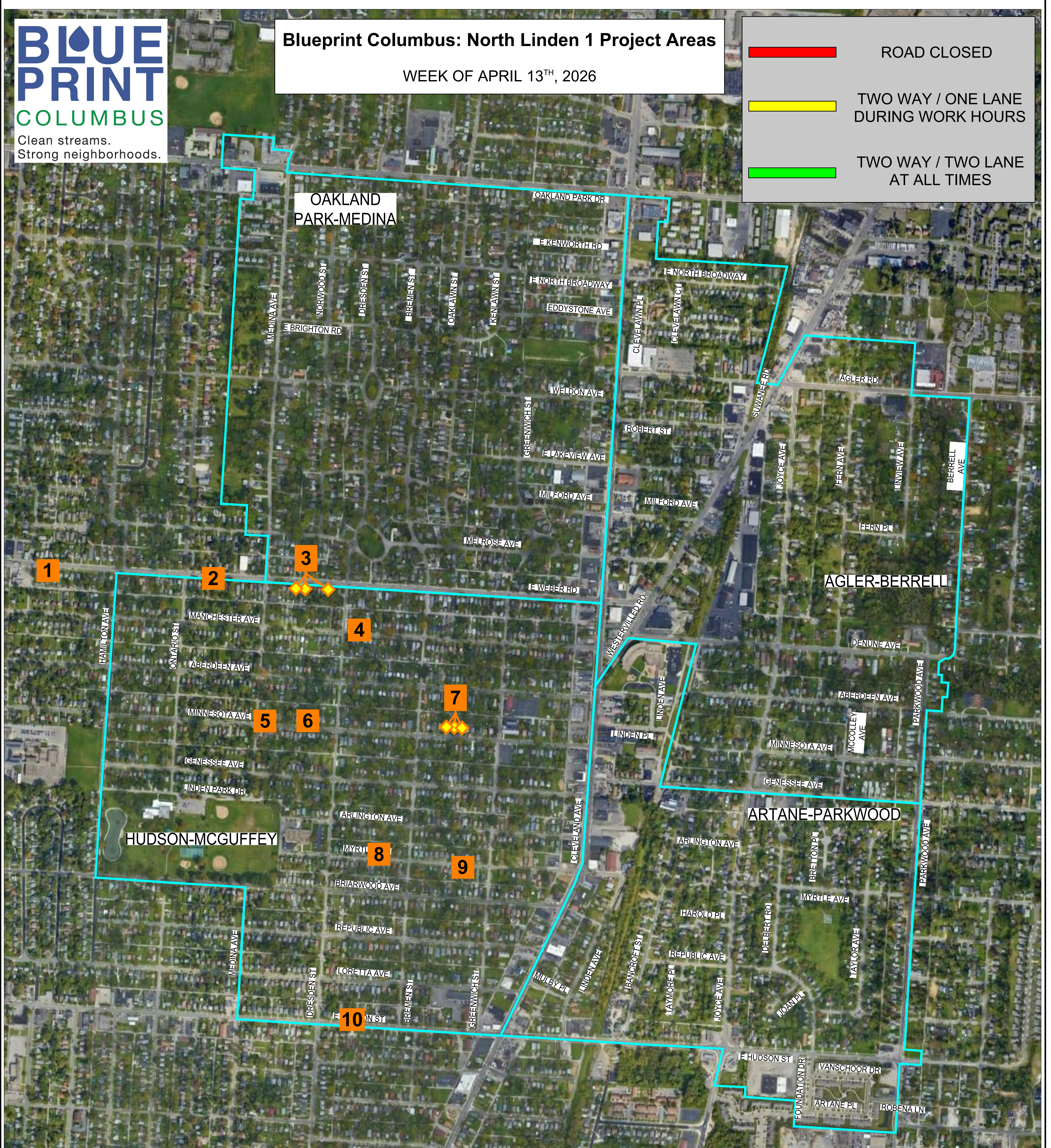


Blueprint Columbus: North Linden 1 Project Areas

WEEK OF APRIL 13TH, 2026

-  ROAD CLOSED
-  TWO WAY / ONE LANE DURING WORK HOURS
-  TWO WAY / TWO LANE AT ALL TIMES



HUDSON-MCGUFFEY

- 1) 1195 E. WEBER RD. -- POINT REPAIRS BY BLD.
- 2) 1357 E. WEBER RD. -- POINT REPAIRS BY BLD.
- 3) 1441 / 1451 / 1471 E. WEBER RD. -- POINT REPAIRS BY BLD.
- 4) 1500 MANCHESTER AVE. -- POINT REPAIRS BY BLD.
- 5) 1394 MINNESOTA AVE. -- CLEANOUT INSTALLATIONS BY BLD.
- 6) 1438 MINNESOTA AVE. -- CLEANOUT INSTALLATIONS BY BLD.
- 7) 1576-1578 / 1580 / 1584 MINNESOTA AVE. -- CLEANOUT INSTALLATIONS BY BLD.
- 8) 1488 MYRTLE AVE. -- CLEANOUT INSTALLATIONS BY BLD.
- 9) 1569 MYRTLE AVE. -- CLEANOUT INSTALLATIONS BY BLD.
- 10) 1438 E. HUDSON ST. -- CLEANOUT INSTALLATIONS BY BLD.

