

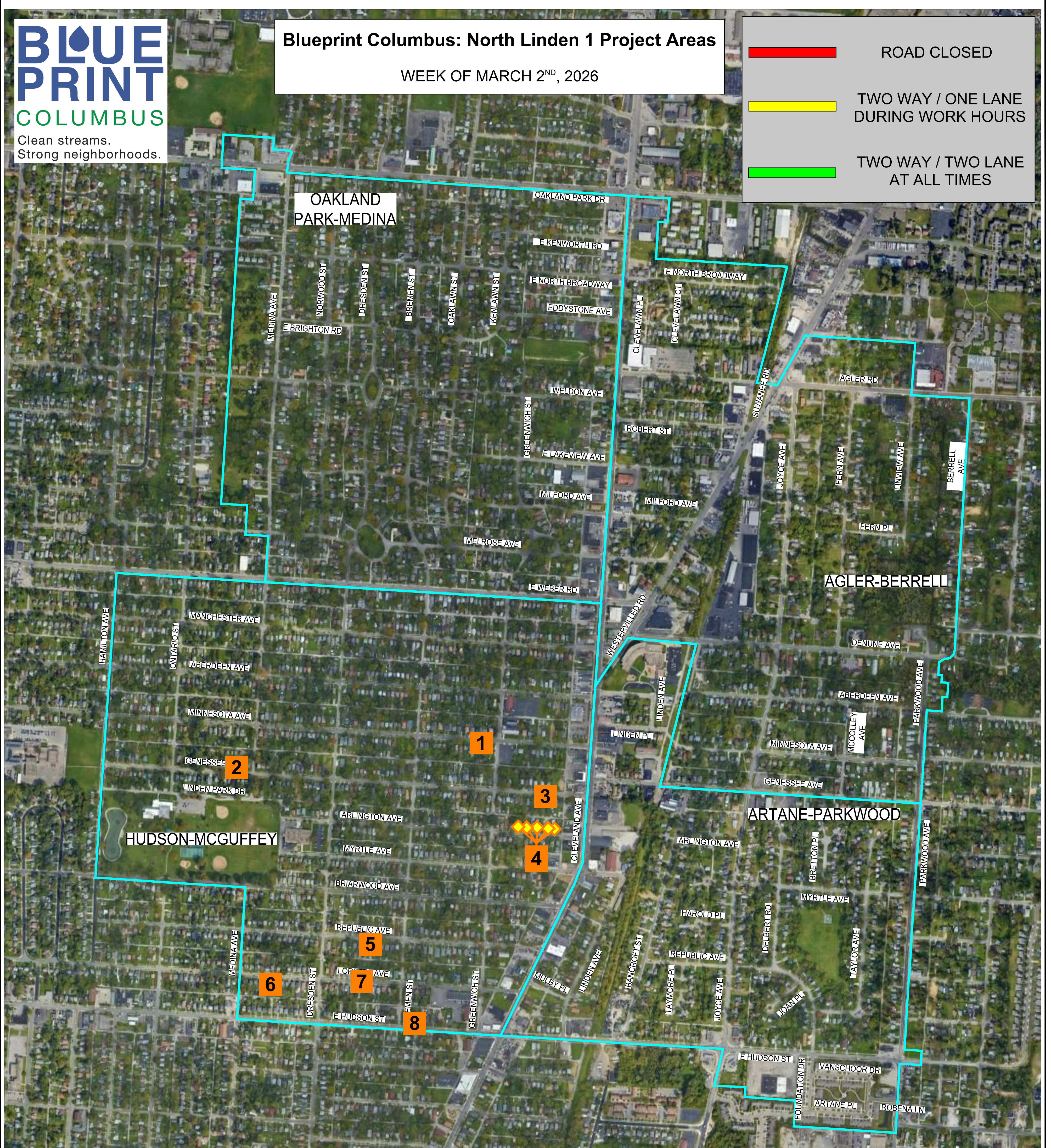
	ROAD CLOSED
	TWO WAY / ONE LANE DURING WORK HOURS
	TWO WAY / TWO LANE AT ALL TIMES



**HUDSON-MCGUFFEY**

- 1) 1607 MINNESOTA AVE. -- SANITARY LATERAL LINING BY BLD.
- 2) 1360 GENESSEE AVE. -- SANITARY LATERAL LINING BY BLD.
- 3) 1665 GENESSEE AVE. -- POINT REPAIRS BY BLD.
- 4) 1636-1638 / 1640 / 1652 / 1662 / 1666 ARLINGTON AVE. -- POINT REPAIRS BY BLD.
- 5) 1469-1471 REPUBLIC AVE. -- SANITARY LATERAL LINING BY BLD.
- 6) 1365 LORETTA AVE. -- SANITARY LATERAL LINING BY BLD.
- 7) 1456 LORETTA AVE. -- SANITARY LATERAL LINING BY BLD.
- 8) 1504 E. HUDSON ST. -- SANITARY LATERAL LINING BY BLD.

